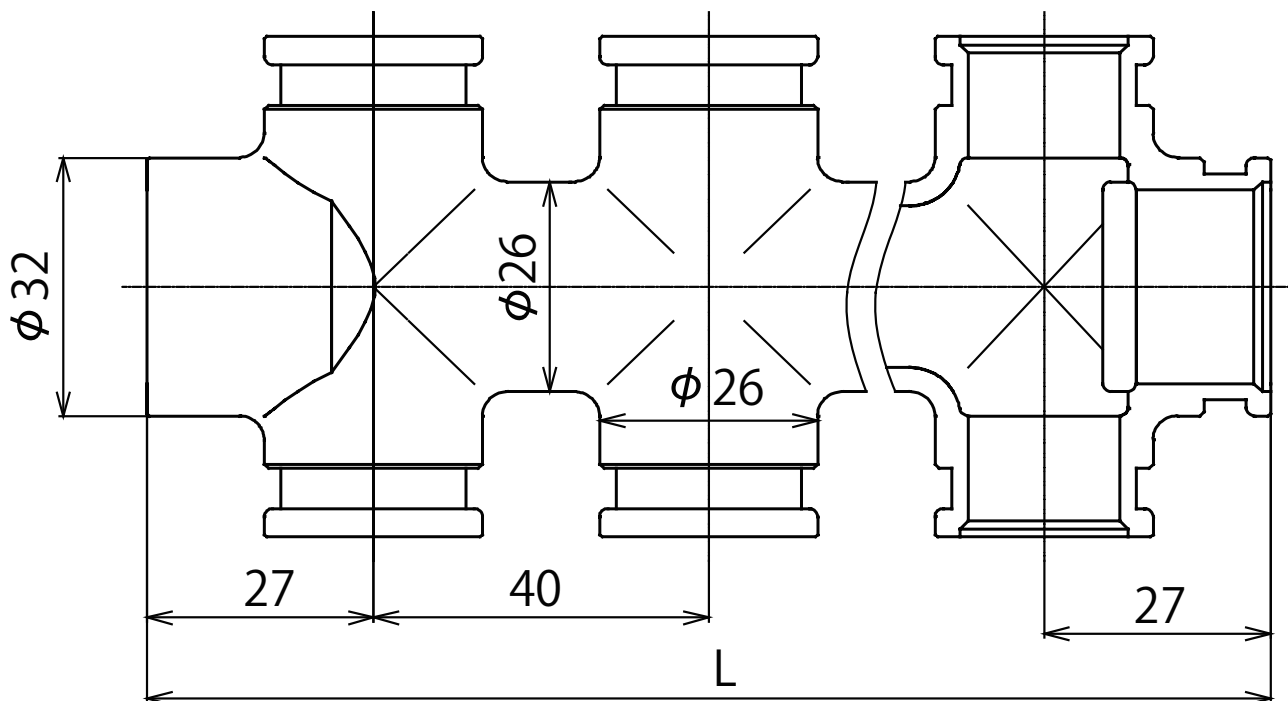


GDMH20-4B, GDMH20-6B, GDMH20-8B, GDMH20-10B



品番	分岐数	L	内箱入数	外箱入数
GDMH20-4B	2P-2P	94	10	40
GDMH20-6B	3P-3P	134	10	30
GDMH20-8B	4P-4P	174	5	20
GDMH20-10B	5P-5P	214	5	15